

**Standard Construction and Materials**

**FRAME:** .081" thick (nominal) extruded aluminum 6063-T52/T6 alloy.

**BLADE:** .081" thick (nominal) extruded aluminum 6063-T52/T6 alloy.  
Blades spaced approximately 3" on center with architectural style hidden mullions.

**SUPPORTS:** Shall incorporate rear angle 2" x 2" x 1/4" extruded aluminum to withstand windload of 20 PSF, approximately 90 mph wind. Supports vary as required, per windload. Spaced approximately 60" on centers.

**FINISH:** Mill

**Options**

Variations - Mitered Corner, Post Corner, Hinged Access, and Cap Covers.

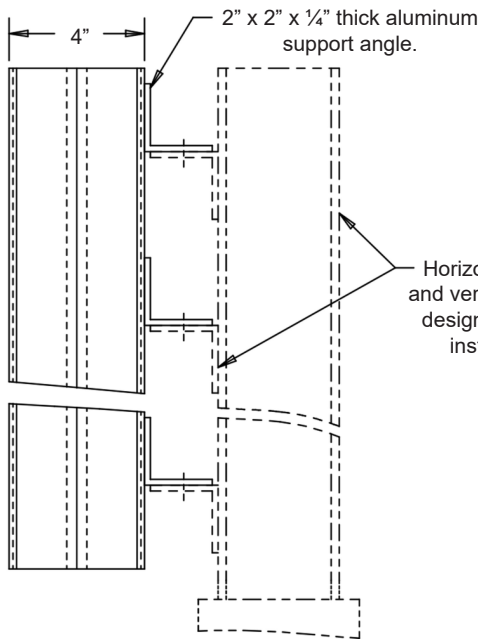
Finishes - Kynar, Baked Enamel, Clear and Color Anodize (Consult the factory for details.)

**Notes**

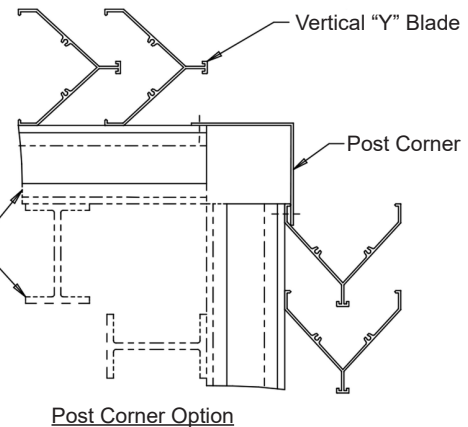
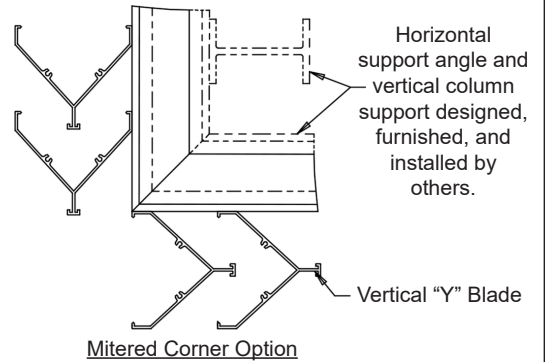
1. Maximum panel size should not exceed 60 sq. ft. or 120"W x 72"H. Louver sections larger than the factory maximum size will require field assembly of smaller sections.
2. Approximate shipping weight is 4.5 lbs./sq.ft.


**Screen Sizes**

Min Panel	Max Single Panel
12"W x 12"H	120"W x 72"H (60 sq. ft.)



Not to scale



									
Item #	Qty	Height	Width			Mullion	Mitered	Post	Union Made
Screen Size						Corner Type			
Arch. / Eng. :				EDR:		ECN:		Job:	
Contractor:									
Project:				Date:		DWN:		DWG:	

In the interest of product development, Cesco Products reserves the right to make changes without notice.



450 Riverside Dr • Wyalusing PA, 18853  
Phone: 570-746-1888 • Fax: 570-746-9286  
www.cescoproducts.com